

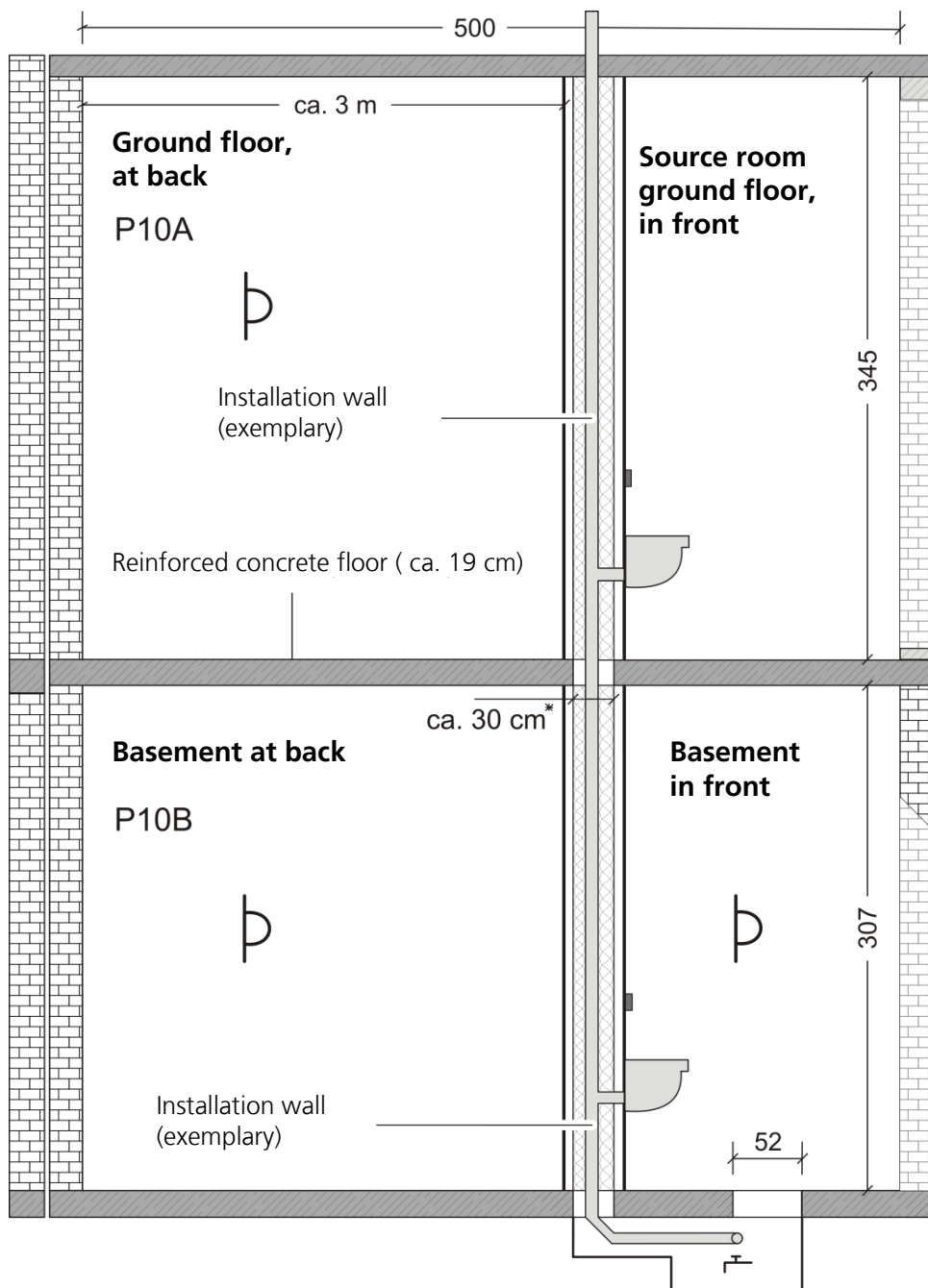
Lightweight Installation Test Facility P10

Measurement	Noise of water installations
Standard	DIN 4109, VDI 4100, SIA 181 DIN EN ISO 10052
Measuring objects	Lightweight installation walls, front-wall and in-wall installations, system wall
Technical data	
Room size (L x W x H)	EG total: 5,00 m x 4,00 m x 3,45 m UG total: 5,00 m x 4,00 m x 3,07 m
Entrance doors (H x W)	EG: 1,95 m x 0,83 m UG: 1,99 m x 0,84 m
Thickness of separating floor	190 mm (reinforced concrete)
Installation walls	variable

More information

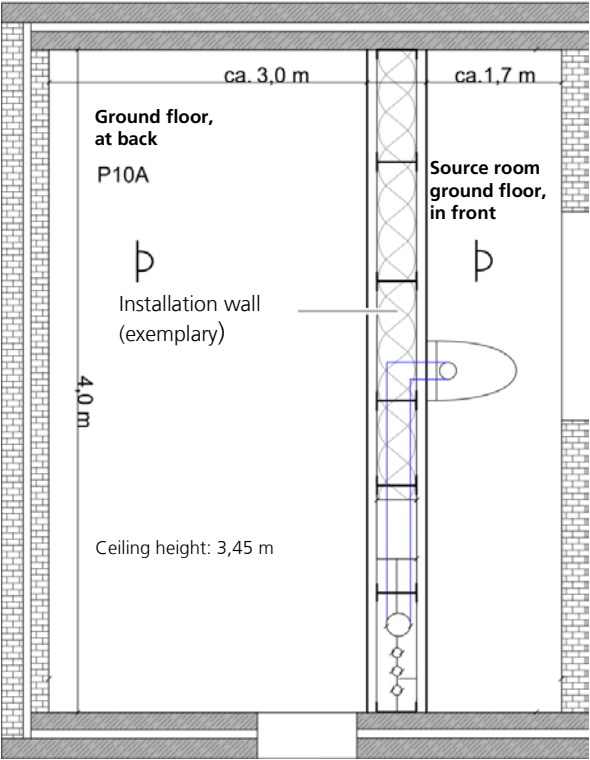
- Test facility for the installation of complete installation walls over two stories
- Controllable water supply (water pressure and flow rate) in both rooms (stacked bathrooms)
- Model condition (test facility with customary flanking transmission) of two separate residential units (ground floor and basement), room configuration "bathroom over bathroom" with an adjacent living room (room to be protected)
- Test results can be used to prove compliance with requirements according to the German standard DIN 4109 and to the guideline VDI 4100.
- Test results can be used for classification according to the Swiss standard SIA 181 (noise sensitivity levels).

Vertical section of the test facility (dimensions in cm)

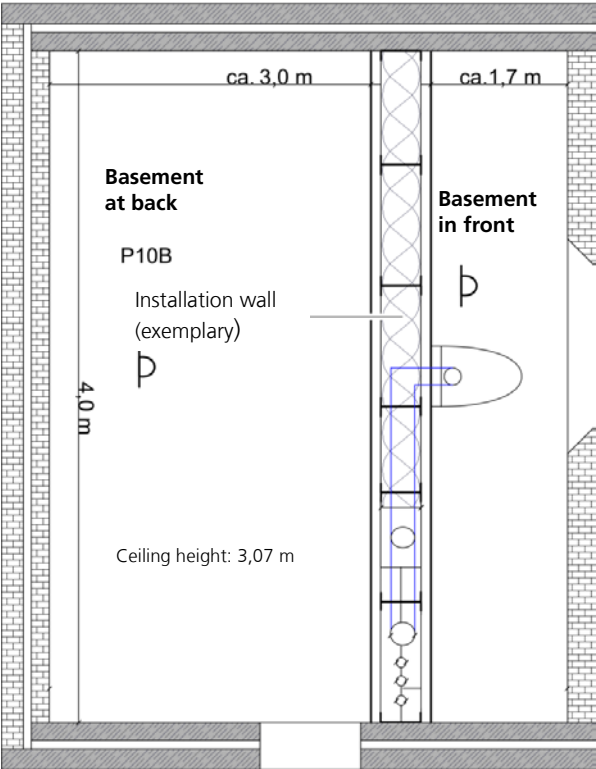


The test laboratory of the Fraunhofer IBP has been granted flexible accreditation according to DIN EN ISO/ IEC 17025 by Deutsche Akkreditierungsstelle GmbH (DAkkS).

Horizontal section of the test facility, ground floor (dimensions in cm)



Horizontal section of the test facility, basement (dimensions in cm)



The test laboratory of the Fraunhofer IBP has been granted flexible accreditation according to DIN EN ISO/ IEC 17025 by Deutsche Akkreditierungsstelle GmbH (DAkkS).